

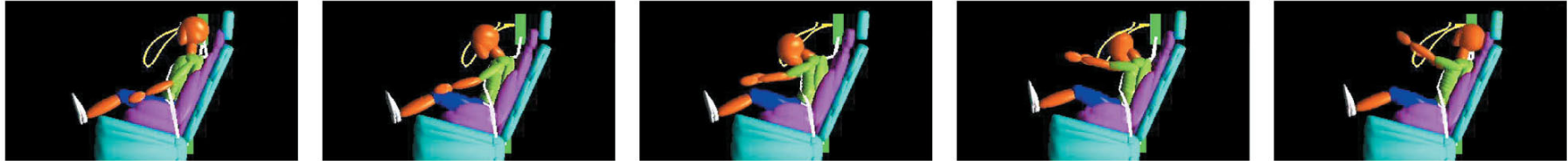
Correct vs. Incorrect Restraint of a 6-year-old Child in a Motor Vehicle Crash



Key Safety Message

Children who have outgrown child safety seats with internal harnesses should be properly restrained in a belt-positioning booster seats until they are at least 8 years old, unless they are 4'9" tall.

Correct Restraint—This simulation below shows how a 6-year-old child properly restrained in a belt-positioning booster seat barely moves during a 35 mph crash.



Incorrect Restraint—The same child, improperly restrained in an adult seat belt with the shoulder belt behind the back*, is thrown forward dramatically in the same crash. The inappropriate fit of the seat belt and lack of upper-body restraint puts the child at risk for severe head, spine and abdominal injury.



** Placing the shoulder belt behind the back is a common and dangerous mistake children make when the shoulder belt doesn't fit properly.*