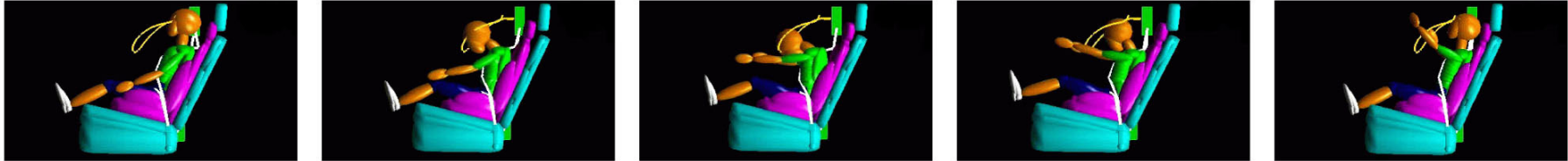


Correct vs. Incorrect Restraint of a 6-year-old Child in a Motor Vehicle Crash

Key Safety Message

Children who have outgrown child safety seats with internal harnesses should be properly restrained in belt-positioning booster seats until they are at least 8 years old, unless they are 4'9" tall.

Correct Restraint—This simulation below shows a 6-year-old child properly restrained in a belt-positioning booster seat who barely moves during a 35 mph crash.



Incorrect Restraint—The same child, improperly restrained in an adult lap-and-shoulder belt, is thrown forward dramatically in the same crash. The inappropriate fit of the seat belt puts the child at risk for severe head, spine and abdominal injury.

